

# SACHEON

Starry Travel and Blue Ocean Sacheon



## Where history and aerospace science meet Eastern Region



**1 Seonjilliseong Fortress** **Hot Place**

Seonjilliseong Fortress was constructed to protect the Tongyangchang Storehouse, which was 1 of 12 tribute granaries during the Goryeo Dynasty. It was then remodeled into a Japanese fortress by the Japanese army during the Japanese invasion of Korea in 1592, and was the site of the ferocious battle at which the Admiral Yi Sun-Shin defeated the Japanese invaders. A cherry blossom tunnel and cherry blossom trees line the long path towards Seonjill Fortress and their magnificent beauty attracts many tourists in the spring.

📍 Around 170 Seonjin-ri, Yonghyeon-myeon



**7 Rainbow-colored coastal road** **Hot Place**

A mud-flat exploration road where the harmony between the 6.2km section of the rainbow-colored protective wall between Jongpo and Miryong Village, and the beautiful sunset and ocean create splendid scenery. This beautiful coastal road has numerous photo zones, such as the 'When nostalgia sets in' sculpture.

📍 Around Sinchon-ri, Yonghyeon-myeon

### Cemetery of Joseon-Ming Allied Forces, Sacheon



This is a cemetery for soldiers of the Joseon-Ming allied forces that died during a fierce battle with Japanese forces besieged in the Seonjin Japanese Fortress during the Second Japanese Invasion of Korea in 1598, the 31st year of King Seonjo's reign. It became a Provincially Designated Monument in November 1985 and has been protected since, with a memorial service for the fallen soldiers of the Joseon-Ming allied forces held in autumn every year.

📍 402 Seonjin-ri, Yonghyeon-myeon



**8 Sacheon Aerospace Science Museum** **Hot Place**

This cultural experience space is equipped with a permanent exhibition hall divided into five themed spaces: Aero History, Aero Factory, Aero Culture, Aero Playground and the Planned Exhibition Room. There are also a 4D theater, VR experience zone, outdoor exhibition ground, and more to nurture unlimited dreams and boundless imagination for the universe.

📍 108 Gongdan-1-ro, Sanam-myeon ☎ 055-831-3344 (closed on Mondays)



**Aerospace Museum**

This aerospace culture experience space includes an aerospace center with an exhibition on the history of global aviation, with airplane models, space exhibits, etc., a freedom guardian center that exhibits the activities of the Korean Army, and an exhibition of fighter jets, trainer aircraft, transportation aircraft, etc. in the outdoor exhibition ground.

📍 78 Gongdan-1-ro, Sanam-myeon ☎ 055-831-6565

### Sacheoneupsong Walled Town



This flat mountainous fortress was constructed by Shin In-Son, a minister of national defense, under the order of the king in the 24th year King Sejong's reign (1442). It was later reclaimed by the Joseon-Ming allied forces that fought against the Japanese forces during the Second Japanese Invasion of Korea in 1597. In addition, a memorial stone for the March 12 Independence Movement was erected in Suyang Park to commemorate the independence spirit and the sacrifices of patriotic martyrs in Sacheon.

📍 51 Suyanggonwon-gil, Sacheon-eup

## Always filled with an abundance of things to see Festival

### Apr Sacheon Waryong Cultural Festival

The festival offers a wide range of entertaining programs that blend local culture with dragon-and-king themes and aerospace content, including the Sacheon Drone Light Show, street parades, dragon dance performances, a historical drama depicting King Hyeonjong of Goryeo, and the Waryong Superstar competition.

📍 Around Sacheon City Hall Square ☎ 055-835-6416



### Apr Samcheonpohang Fishery Festival

This festival held at Samcheonpo Port features an array of fresh seafood harmonized with the indigo-blue ocean. It offers numerous enjoyments with divers programs such as a seafood singing competition, fishing and yachting experiences, and more.

📍 Around Palpo Port ☎ 055-833-2747



### Aug Samcheonpohang Natural Gizzard Shad Festival

In Sacheon, you can taste the seasonal gizzard shad earlier than anywhere else in the country, and during the summer festival, it boasts of fuller flavor than later in autumn.

📍 Around the Palpo specialized restaurant ☎ 055-832-8568



### Oct Sacheon Air Show

Diversified programs related to aerospace including an acrobatic flight by the Black Eagles as well as flight teams invited from overseas, a drone experience, and more, add greater fun to the festival.

📍 Sacheon Airport ☎ 055-831-2061



### Oct Sacheon Agricultural Festival

This festival commemorates Farmer's Day with diversified programs for tourists such as an exhibition, a sales and experiential event for outstanding agricultural and livestock specialties of Sacheon, and more.

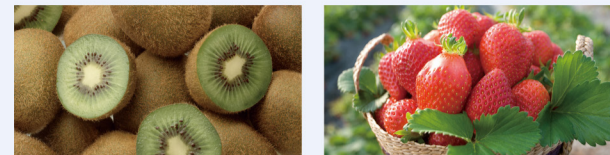
📍 General region of Sunset Square at Sacheon City Hall ☎ 055-832-3760-4



## That can be tasted in Sacheon Specialties

### Agricultural products

The high-quality specialties of Sacheon include tomatoes, sweet pumpkins, pears, sweet persimmons, Japanese apricots, kiwis, sweet potatoes, strawberries and blueberries, that are grown with the utmost sincerity in pristine environment



### Seafood

Conger eel, oysters, sea squirt, gizzard shad, greenling, and black sea bream are among the fresh seafood you can enjoy in Sacheon, straight from the pristine southern coast.



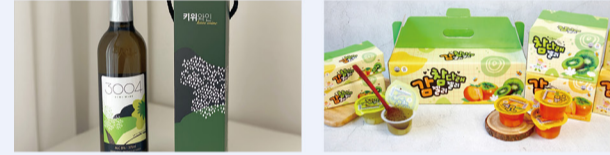
### Dried seafood

Dried anchovy from bamboo traps, regular dried anchovy, Samcheonpo dried filefish, and other dried seafood—all sun and sea breeze dried along the clean waters of the Hallyeo Waterway—are highly regarded as top-quality products with outstanding flavor.



### Processed products

Darae(kiwi) wine, green tea, plum juice, dried persimmons, doengjib, strawberry jam, honey and jelly, etc., made with natural ingredients of Sacheon not only offer luxurious flavors, but you can enjoy their colors and fragrances as well.



## Tradition and representativeness of the cuisines of Sacheon 30-year old restaurants

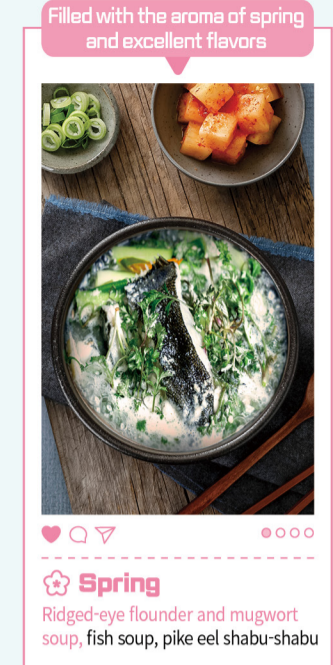
Restaurant name	Address	Tel. No.	Menu
Daesung Restaurant	23-2 Pyeonghwa-1-gil, Sacheon-eup	852-6564	Korean table d'hotel, kimchi stew
Deokhap Banjeom	81 Eupnae-1-gil, Sacheon-eup	852-2165	Dokhap jjajang, course meal
Duryang Sashimi Restaurant	92 Duryanggonwon-gil, Sacheon-eup	852-3701	Leather carp sashimi, hairy crab soup
Biryong Banjeom	5-21 Sijang-1-gil, Sacheon-eup	852-0813	Jjjangmyeon, sweet & sour pork
Yeji Snack Bar	16-8 Sijang-2-gil, Sacheon-eup	854-1054	Noodles, handmade noodles
Wonjo Long-legged Octopus	30 Eupnae-1-gil, Sacheon-eup	852-9633	Octopus hot pot
Wonjo Sacheon Cold Buckwheat Noodles	1852 Sacheon-daero, Sacheon-eup	852-6200	Cold buckwheat noodles, spicy buckwheat noodles
Jaeseon Cold Buckwheat Noodles	2-11 Musan-3-gil, Sacheon-eup	852-2132	Cold buckwheat noodles, spicy buckwheat noodles
Cheonga Sashimi Restaurant	21 Jeongui-1-gil, Sacheon-eup	854-9481	Assorted sashimi, sashimi set menu
Gasan Sashimi Restaurant	27 Joehang-gil, Chukdong-myeon	854-6600	Assorted sashimi, freshwater eel
Bidulgjip	181 Goryang-ro, Goryang-myeon	853-0150	Whole chicken soup with medicinal herbs
Hani Sashimi Restaurant	465 Geobuk-gil, Seopo-myeon	854-7676	Sashimi, steamed oysters

### Dong Regions

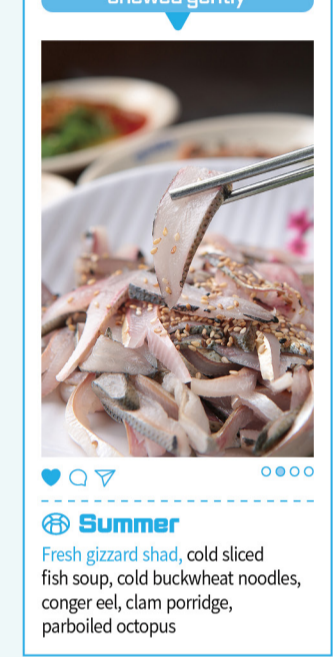
Restaurant name	Address	Tel. No.	Menu
Bogwang Restaurant	70 Sunam-gil (Dong-dong)	833-3191	Small intestine hot pot
Teolbo Wonjo Seafood Stew	31 Sunam-3-gil (Dong-dong)	833-5395	Stir-fried octopus
Jell Abalone Sashimi Restaurant	7 Eosijang-gil (Seo-dong)	833-2040	Sashimi, seafood
Myeongdong Ribs	22 Sunam-gil (Seongu-dong)	833-5331	Fresh beef ribs, marinated beef ribs
Sanho Restaurant	14 Jungang-ro (Seongu-dong)	833-3820	Sanho set menu, grilled fish
Chungmu Gimbab	7 Jungang-ro (Seongu-dong)	833-7104	Chungmu gimbab, udon
Pyeonghwa Spicy Braised Monkfish	10 Palpo-2-gil (Seongu-dong)	833-0764	Spicy braised monkfish, monkfish soup
Hanyang Braised Pig's Feet	17-9 Palpo-1-gil (Seongu-dong)	833-1921	Braised pig's feet, napa wraps with pork
Golden Carriage	11 Parpo-1-gil (Seongu-dong)	833-4433	Spicy braised monkfish, boiled monkfish slices
Wonjo Seoul Ggakdugi	10 Donggeum-2-gil (Dongseong-dong)	832-3824	Ox bone soup, ox tailbone soup
Mirae Special Whole Chicken	3 Palpo-3-gil (Seongu-dong)	833-8687	Fried chicken, braised chicken
Samcheonpo Wonjo Samhak Cold Raw Fish Soup	9 Moksom-gil (Seongu-dong)	833-2257	Fish, cold soup with raw abalone
Cheonungak	10 Palpo-3-gil (Seongu-dong)	832-5860	Rice mixed with spicy seafood noodle soup, cold soybean noodle soup
Haemigwan	97 Beolri-1-gil (Beolri-dong)	832-4345	Chinese style bibimbab, sweet & sour pork

## SACHEON FOOD STAGRAM

Filled with all sorts of delicacies for each season. Introducing the representative cuisines of Sacheon for each season.



### Delicacies to be chewed gently



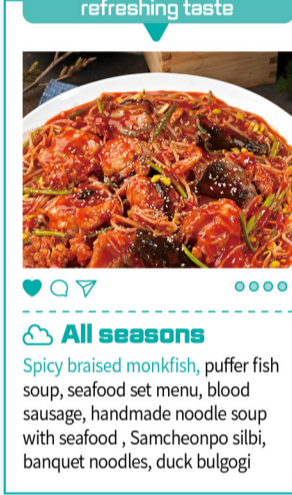
## Comprehensive healthy food of the Sacheon sea



### Excellent strong and savory taste



### Excellent spicy and refreshing taste



## For enjoyment of the ocean and the sky Southern Region



**1 Changseon Samcheonpodaegyo Bridge** **Hot Place**

Stretching between the Daebang region of Sacheon-si and Changseon in Namhae-gun, this is the first suspension bridge to connect an island with another island in Korea. It is a renowned tourist attraction, selected as one of the 'top 100 beautiful roads of Korea' and 'top 100 night tourist attractions of Korea.'

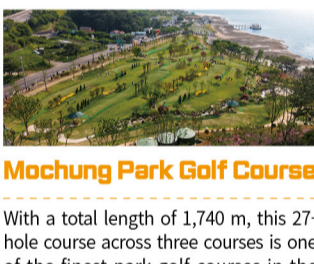
📍 Samcheonpo Bridge Park, 35 Sacheon-daero



**Choyangdo Island**

Choyang Island offers stunning views of Hallyeohaesang National Marine Park and is an especially popular spot for watching the sunset. As a stop on the Sacheon Sea Cable Car route, it features the Aramaru Aquarium, the Sacheon Eye, a maze garden, and the Baejeon Observatory, among other attractions.

📍 60 Choyang-gil



**Mochung Park Golf Course**

With a total length of 1,740 m, this 27-hole course across three courses is one of the finest park golf courses in the country. Golfers of all ages and skill levels can enjoy play while taking in views of the Silan sunset and the sea. Beautifully landscaped with a variety of trees and seasonal flowers, the course offers plenty to see as well.

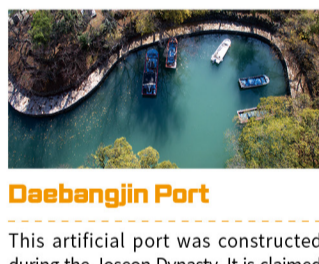
📍 San 165-1, Songpo-dong and surrounding area ☎ 055-835-9177



**4 Siran Coastal Road & Sunset Glow Cafe Street**

Siran Coastal Road & Sunset Glow Cafe Street offer excellent views of the glow of the sun setting over Seosan Mountain in Namhae. There are numerous cafes from which to enjoy the picturesque scenery as well as the sunset observatory bridge for the best sunset experience of your life.

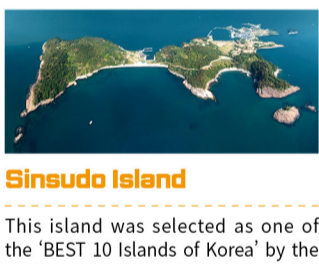
📍 Siran Coastal Road: General region of 1254 Silan-dong  
📍 Sunset Glow Cafe Street: General region of Haesangwangwang-ro



**Daebangjin Port**

This artificial port was constructed during the Joseon Dynasty. It is claimed that the Admiral Yi Sun-Shin filled the port with fresh water to prevent oysters from attaching themselves to the Turtle Ships hidden in the Port during the Japanese invasion of Korea in 1592. As tate of Admiral Yi Sun-Shin stands tall at the summit of a hill at the Port.

📍 251 Daebang-dong



**Sinsudo Island**

This island was selected as one of the 'BEST 10 Islands of Korea' by the Ministry of Public Administration and Security in 2010. You can view beautiful small islands floating on the indigo blue ocean as you walk along the stroll path around the island.

📍 Around 1-52 Sinsuseo-gil



**Yongdu Park and double cherry blossoms at Cheongryongsa Temple**

Yongdu Park is a recreational space established by using the Samcheonpo River in environmentally-friendly manner. In addition, Cheongryongsa Temple is renowned for the dazzling view created by the harmony between the traditional multicolored paintwork on the wooden temple buildings and the that bloom fully in the spring.

📍 Yongdu Park: Around of 355 Yongsang-dong  
📍 Cheongryongsa Temple: 373 Waryong-gil



**10 Namildae Beach**

Goun Choe Chiwon, one of the greatest scholars at the end of Silla Dynasty, gave this beach the name 'Namildae' after becoming mesmerized by the outstanding scenery created by the lush and blue ocean, white sandy beach and surrounding scenic views. Numerous recreational sports including ecotone and banana boats can be enjoyed at the beach.

📍 11-19 Morye-2-gil



**Kokkiribawi Rock**

This rock has the configuration of an elephant and appears to be drinking seawater with its nose immersed in the ocean. There's a natural cave under the 'trunk' of the rock, and the surrounding area has a mysterious appearance with the perpetually rippling waves and deep waters.

📍 Around 11-19 Morye-2-gil



**6 Samcheonpo Yongsung Fish Market**

This representative fish market of Samcheonpo with more than 50 years of history offers a wide variety of seafoods. Visitor can have a taste of the freshest sliced raw fish at relatively low cost at the numerous sashimi restaurants within the market.

📍 64 Eosijang-gil ☎ 055-835-2229



**Palpo Specialized Food Avenue**

This avenue specialized for tourism and recreation at Samcheonpo Port offer fresh sliced raw fish and numerous other seafoods. Visitors can also enjoy beautiful scenic views such as the blue ocean, Mok Island, night scenic lightings, and more.

📍 Around 65 Palpo-1-gil ☎ 055-832-8858

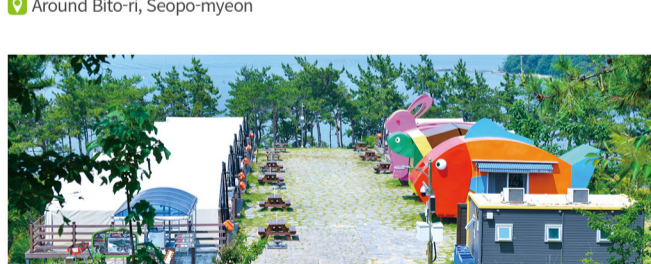
## Harboring the legend of Byeollujubeon Western Region



**11 Bitoseom Island (Byeollujubeon Recreational Park)** **Hot Place**

Bitoseom Island, which is connected to the mainland by a suspension bridge, is home to a large mudflat and the legend of Byeollujubeon (traditional Korean story of a soft-shelled turtle venturing onto land to seek the liver of a rabbit to heal the illness of the dragon king of ocean). Visitors can enjoy the scenic view of the fishing village while driving through the cherry-blossom-lined road in the spring.

📍 Around Bito-ri, Seopo-myeon



**Bito National Leisure Campground**

In this nature-friendly campground, children can run around and play free from the noise of automobiles and pollution. It is equipped with 28 ordinary camp sites, 12 glamping buildings and three story houses.

📍 132 Yunggung-ro, Seopo-myeon ☎ 070-8988-4000



**Bito Ocean Fishing Park**

Bito Ocean Fishing Park was built by immersing artificial fish shelters in the ocean, there by allowing fishing throughout the year. It, features a pedestrian bridge, fishing pier, marine pension, children's playground, and more.

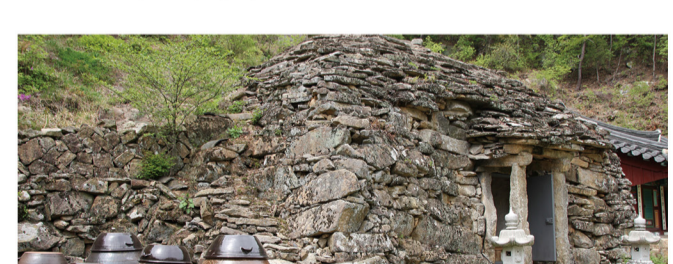
📍 San 47-9 Bito-ri, Seopo-myeon ☎ 055-853-8859



**5 Dasolsa Temple in Bongmyeongsan Mountain** **Hot Place**

This old Buddhist temple with 1,500 years of history is situated at the foot of Bongmyeongsan Mountain. Ansimyoo at Dasolsa Temple is where Manhae Han Yong-un wrote the draft of the 'Declaration of Independence', and it provided the motto for 'Deungsinbi (Life-sized Statue of Buddha)', a novel by Kim Dong-ri.

📍 417 Dasolsa-gil, Goryang-myeon



**Boanam Grotto of Dasolsa Temple**

This tomb-like stone cave was created by piling up natural rocks like a staircase. A seated stone Buddha with a height of 1.8m is located at the center of the stone cave surrounded by statues of 16 disciples of Buddha carved simply into the surrounding natural rocks.

📍 217 Manjeom-gil, Goryang-myeon



**1 Sacheon Ocean Cable Car** **Hot Place**

Korea's first cable car connecting mountain, sea, and island. Departing from Daebang Station, it crosses the sea to Choyang Station (island) and continues to Gaksan Station (mountain), covering a 2.43 km route with a variety of scenic views along the way.

📍 18 Sacheon-daero ☎ 055-831-7300 (closed on the 1st & 3rd Mondays)



**2 Aramaru Aquarium** **Hot Place**

More than 400 rare animals including manatee, also referred to as mermaids, shoebill, which are descended from dinosaurs, enormous hippopotamus and a 33m long bone sculpture of a blue whale, the largest animal in the history of earth, can be encountered at the Sacheon Aramaru Aquarium.

📍 18 Sacheon-daero ☎ 055-835-5571



**3 Sacheon Cable Car Natural Recreational Forest** **Hot Place**

A recreation forest spanning 42 hectares on Mount Gaksan, including 20 hectares of Japanese cypress forest. Facilities include various accommodations, camping decks, forest walking trails, a net adventure course, and a wood culture experience center.

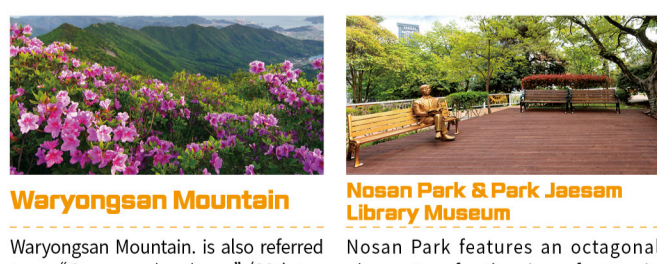
📍 242-45 Silan-gil ☎ 055-835-9524



**Gaksan Mountain Beacon**

This beacon was installed during the Goryeo Dynasty. It received signals from the beacon on Daebangsan Mountain of Namhae and passed them onto the beacons on Anjeomsan Mt in Yonghyeon and Woosan Mountain, in Goryang.

📍 San 2 Daebang-dong



**Nosan Park & Park Jaesam Library Museum**

Nosan Park features an octagonal observatory for the view of ocean in front of Samcheonpo, a fish sculpture and a Samcheonpo lady sculpture, and a Park Jaesam Library Museum for a look of the life of Park Jaesam, a representative lyric poet of Samcheonpo.

📍 27, Bakjaesam-gil

## Tourism Information and Inquiries

Hotel & Resort & Pension	Hotel & Resort & Pension	Hotel & Resort & Pension	
The Mer	010-9142-5272	Cielo	0507-1491-1700
Bada Jeongwon Pension	010-2852-5674	Arte Resort	0507-1391-5001
Byeollujubu Tourist Pension	010-5693-3663	Arvito	0507-1336-8046
Mado Galbanga Glamping & Pension	0507-1399-7820	The Rabbit and the Tortoise	0507-1378-1822
Bito Island Shinwoo Resort	0507-1497-4244	Happy B Happy Pension	0507-1482-7007
Sacheon Tourist Hotel	055-855-9000	Hostel Stay Node	0507-1373-

# SACHEON HERE



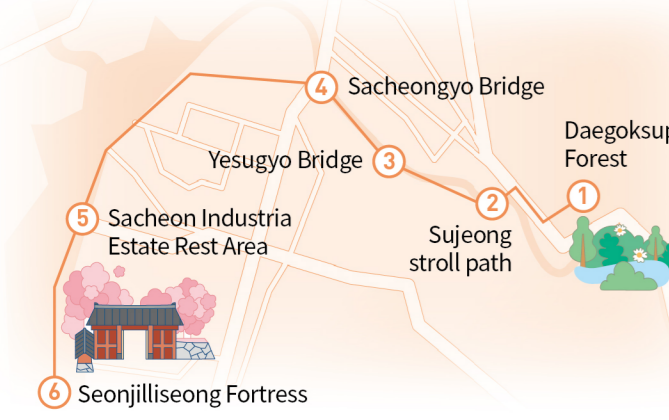
## Hot Places

- 1 Samcheonpodaegyo Bridge and Sacheon Ocean Cable Car
- 2 Aramaru Aquarium
- 3 Sacheon Cable Car Natural Recreational Forest
- 4 Sunset Glow Cafe Street
- 5 Dasolsa Temple in Bongmyeonsan Mountain
- 6 Samcheonpo Yonggung Fish Market
- 7 Rainbow-colored Coastal Road
- 8 Sacheon Aerospace Science Museum
- 9 Cherry Blossoms at Seonjilliseong Fortress
- 10 Namildae Beach
- 11 Bitoseom Island Tidal Flat
- 12 Wine gallery

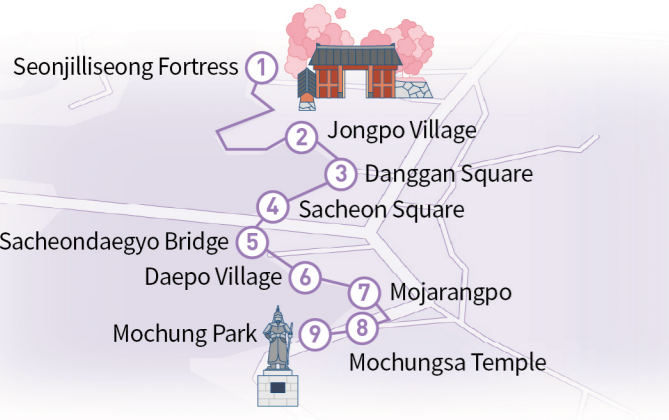
Travel to various locations in Sacheon that you didn't know about

## Yi Sun-Sin Sea Route Course

### Sacheon Hope Road



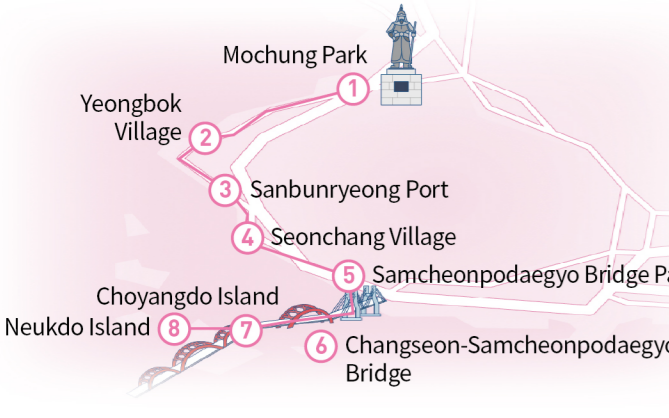
### First Turtle Ship Road



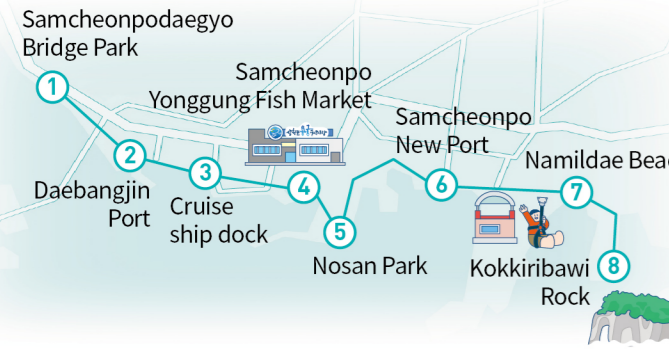
### Rabbit and Tortoise Road



### Siran Sunset Road

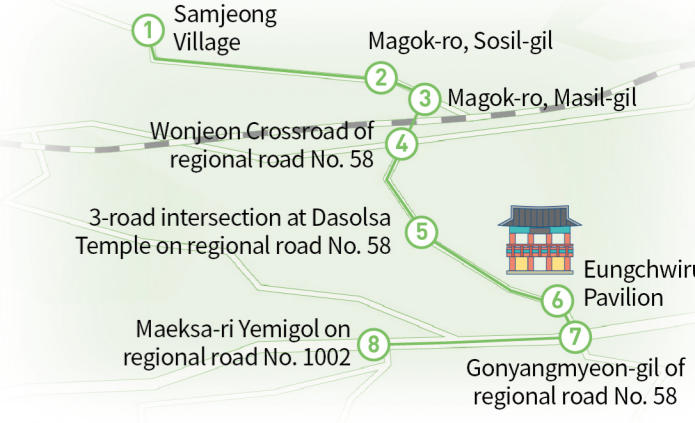


### Samcheonpo Elephant Road



# Sacheon Tourism Information Map

## Yisuninbaekujonggun-ro (18 km/4 hours and 30 minutes)



## Reunion road of King Hyeonjong and his son during the Goryeo Dynasty (8.3 km/3 hours and 30 minutes)



## Park Seo-Jin Road (13 km/4 hours)



## Korea Dulle Trail, Namparang-gil Course No. 34 (10.2 km/3 hours)



## Korea Dulle Trail, Namparang-gil Course No. 35 (12.7 km/4 hours)



Legend		